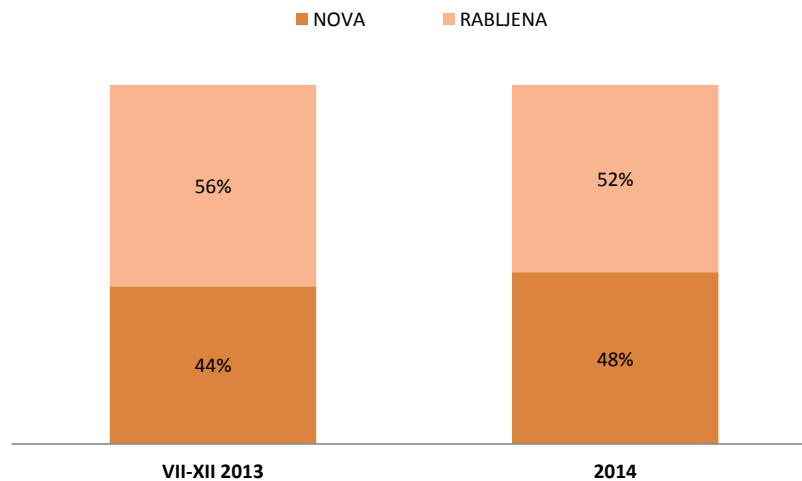


POSEBNI POREZ NA MOTORNA VOZILA 2014

1. Broj motornih vozila i obračunati posebni porez na motorna vozila
2. Broj motornih vozila i obračunati posebni porez na motorna vozila po mjesecima
3. Broj osobnih i pick-up vozila i obračunati posebni porez prema vrsti goriva
4. Broj osobnih i pick-up vozila prema vrsti goriva i emisiji CO₂
5. Broj motocikala i ATV vozila prema razini emisije ispušnih plinova
6. Broj motornih vozila prema marki vozila
7. Broj motornih vozila prema godini proizvodnje
8. Broj motornih vozila po carinskim uredima
9. Ostvareni prihodi od posebnog poreza na motorna vozila
10. Povrat posebnog poreza na motorna vozila

BROJ MOTORNIH VOZILA I OBRAČUNATI POSEBNI POREZ NA MOTORNA VOZILA

Predmet oporezivanja	BROJ VOZILA		OBRAČUNATI PPMV (kn)	
	VII - XII /2013	2014	VII - XII /2013	2014
Osobna i pick-up vozila	10.193	34.183	121.137.905	480.780.406
Motocikli, ATV vozila...	389	1.518	2.028.219	7.781.008
NOVA VOZILA	10.582	35.701	123.166.124	488.561.414
Osobna i pick-up vozila	13.306	38.226	109.598.247	295.751.572
Motocikli, ATV vozila...	189	765	872.099	2.912.410
RABLJENA VOZILA	13.495	38.991	110.470.346	298.663.982
Osobna i pick-up vozila	23.499	72.409	230.736.152	776.531.978
Motocikli, ATV vozila...	578	2.283	2.900.318	10.693.418
UKUPNO	24.077	74.692	233.636.470	787.225.396



Izvor podataka: IS CURH (na dan 22.2.2016.)

BROJ MOTORNIH VOZILA I OBRAČUNATI POSEBNI POREZ NA MOTORNA VOZILA

VRSTA VOZILA	OSOBNA I PICK-UP VOZILA	MOTOCIKLI, ATV VOZILA	UKUPNO	NOVA VOZILA			OSOBNA I PICK-UP VOZILA	MOTOCIKLI, ATV VOZILA	UKUPNO
				OSOBNA I PICK-UP VOZILA	MOTOCIKLI, ATV VOZILA	UKUPNO			
STAROST VOZILA				NOVA VOZILA					
GODINA / MJESEC	2013			2014			2014. / 2013. (%)		
SIJEČANJ			0	2.022	46	2.068			
VELJAČA			0	2.351	65	2.416			
OŽUJAK			0	3.415	135	3.550			
TRAVANJ			0	4.547	217	4.764			
SVIBANJ			0	4.884	207	5.091			
LIPANJ			0	4.193	174	4.367			
SRPANJ	1.846	123	1.969	2.883	208	3.091	56,18%	69,11%	56,98%
KOLOVOZ	1.156	82	1.238	1.597	126	1.723	38,15%	53,66%	39,18%
RUJAN	1.530	49	1.579	2.029	104	2.133	32,61%	112,24%	35,09%
LISTOPAD	1.999	60	2.059	2.451	122	2.573	22,61%	103,33%	24,96%
STUDENI	1.788	31	1.819	1.877	56	1.933	4,98%	80,65%	6,27%
PROSINAC	1.874	44	1.918	1.934	58	1.992	3,20%	31,82%	3,86%
BROJ VOZILA	10.193	389	10.582	34.183	1.518	35.701	235,36%	290,23%	237,37%

SIJEČANJ			0	29.829.684	263.386	30.093.070			
VELJAČA			0	36.172.359	312.082	36.484.441			
OŽUJAK			0	55.415.685	706.570	56.122.255			
TRAVANJ			0	53.715.170	1.212.879	54.928.049			
SVIBANJ			0	56.630.006	1.072.289	57.702.295			
LIPANJ			0	53.266.732	945.357	54.212.089			
SRPANJ	16.458.784	538.825	16.997.609	45.389.848	1.040.203	46.430.051	175,78%	93,05%	173,16%
KOLOVOZ	12.189.139	382.077	12.571.216	23.347.599	607.948	23.955.546	91,54%	59,12%	90,56%
RUJAN	22.210.647	278.084	22.488.731	30.547.812	476.347	31.024.159	37,54%	71,30%	37,95%
LISTOPAD	24.284.219	392.515	24.676.734	38.028.015	579.017	38.607.032	56,60%	47,51%	56,45%
STUDENI	21.246.520	209.122	21.455.642	29.453.015	254.901	29.707.917	38,63%	21,89%	38,46%
PROSINAC	24.748.596	227.596	24.976.193	28.984.481	310.030	29.294.511	17,12%	36,22%	17,29%
OBRAČUNATI PPMV - kn	121.137.905	2.028.219	123.166.124	480.780.406	7.781.008	488.561.414	296,89%	283,64%	296,67%

VRSTA VOZILA	OSOBNA I PICK-UP VOZILA	MOTOCIKLI, ATV VOZILA	UKUPNO	RABLJENA VOZILA			OSOBNA I PICK-UP VOZILA	MOTOCIKLI, ATV VOZILA	UKUPNO
				OSOBNA I PICK-UP VOZILA	MOTOCIKLI, ATV VOZILA	UKUPNO			
STAROST VOZILA				RABLJENA VOZILA					
GODINA / MJESEC	2013			2014			2014. / 2013. (%)		
SIJEČANJ			0	2.731	33	2.764			
VELJAČA			0	2.833	42	2.875			
OŽUJAK			0	3.140	66	3.206			
TRAVANJ			0	3.398	82	3.480			
SVIBANJ			0	2.968	94	3.062			
LIPANJ			0	2.920	94	3.014			
SRPANJ	934	19	953	3.626	99	3.725	288,22%	421,05%	290,87%
KOLOVOZ	1.640	35	1.675	2.843	59	2.902	73,35%	68,57%	73,25%
RUJAN	2.421	33	2.454	3.550	69	3.619	46,63%	109,09%	47,47%
LISTOPAD	3.210	35	3.245	3.800	58	3.858	18,38%	65,71%	18,89%
STUDENI	2.641	34	2.675	3.193	35	3.228	20,90%	2,94%	20,67%
PROSINAC	2.460	33	2.493	3.224	34	3.258	31,06%	3,03%	30,69%
BROJ VOZILA	13.306	189	13.495	38.226	765	38.991	187,28%	304,76%	188,93%

SIJEČANJ			0	21.361.206	155.703	21.516.909			
VELJAČA			0	21.569.054	168.406	21.737.460			
OŽUJAK			0	23.702.001	246.161	23.948.162			
TRAVANJ			0	26.124.723	325.652	26.450.376			
SVIBANJ			0	24.848.638	371.035	25.219.673			
LIPANJ			0	23.072.658	356.257	23.428.915			
SRPANJ	9.151.179	108.355	9.259.534	29.053.750	358.318	29.412.068	217,49%	230,69%	217,64%
KOLOVOZ	14.621.944	159.921	14.781.865	20.539.813	204.606	20.744.419	40,47%	27,94%	40,34%
RUJAN	19.069.647	105.004	19.174.651	26.363.244	251.267	26.614.510	38,25%	139,29%	38,80%
LISTOPAD	26.356.761	178.136	26.534.897	29.419.792	201.773	29.621.565	11,62%	13,27%	11,63%
STUDENI	20.979.220	149.822	21.129.041	25.334.033	117.725	25.451.759	20,76%	-21,42%	20,46%
PROSINAC	19.419.497	170.861	19.590.357	24.362.659	155.507	24.518.166	25,45%	-8,99%	25,15%
OBRAČUNATI PPMV - kn	109.598.247	872.099	110.470.346	295.751.572	2.912.410	298.663.982	169,85%	233,95%	170,36%

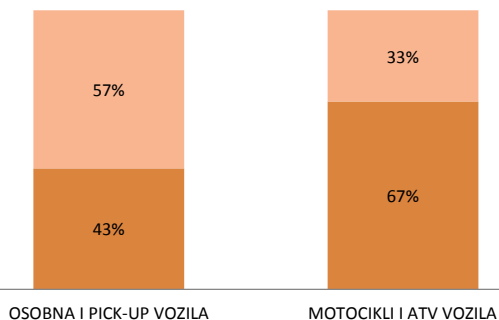
BROJ MOTORNIH VOZILA I OBRAČUNATI POSEBNI POREZ NA MOTORNA VOZILA

VRSTA VOZILA	OSOBNA I PICK-UP VOZILA	MOTOCIKLI, ATV VOZILA	UKUPNO	OSOBNA I PICK-UP VOZILA	MOTOCIKLI, ATV VOZILA	UKUPNO	OSOBNA I PICK-UP VOZILA	MOTOCIKLI, ATV VOZILA	UKUPNO
STAROST VOZILA	VOZILA - UKUPNO								
GODINA / MJESEC	2013			2014			2014. / 2013. (%)		
SIJEČANJ	0	0	0	4.753	79	4.832			
VELJAČA	0	0	0	5.184	107	5.291			
OŽUJAK	0	0	0	6.555	201	6.756			
TRAVANJ	0	0	0	7.945	299	8.244			
SVIBANJ	0	0	0	7.852	301	8.153			
LIPANJ	0	0	0	7.113	268	7.381			
SRPANJ	2.780	142	2.922	6.509	307	6.816	134,14%	116,20%	133,26%
KOLOVOZ	2.796	117	2.913	4.440	185	4.625	58,80%	58,12%	58,77%
RUJAN	3.951	82	4.033	5.579	173	5.752	41,20%	110,98%	42,62%
LISTOPAD	5.209	95	5.304	6.251	180	6.431	20,00%	89,47%	21,25%
STUDENI	4.429	65	4.494	5.070	91	5.161	14,47%	40,00%	14,84%
PROSINAC	4.334	77	4.411	5.158	92	5.250	19,01%	19,48%	19,02%
BROJ VOZILA	23.499	578	24.077	72.409	2.283	74.692	208,14%	294,98%	210,22%
SIJEČANJ	0	0	0	51.190.890	419.089	51.609.978			
VELJAČA	0	0	0	57.741.413	480.488	58.221.900			
OŽUJAK	0	0	0	79.117.686	952.731	80.070.417			
TRAVANJ	0	0	0	79.839.893	1.538.532	81.378.425			
SVIBANJ	0	0	0	81.478.644	1.443.324	82.921.968			
LIPANJ	0	0	0	76.339.390	1.301.614	77.641.004			
SRPANJ	25.609.963	647.181	26.257.143	74.443.598	1.398.521	75.842.118	190,68%	116,09%	188,84%
KOLOVOZ	26.811.083	541.997	27.353.081	43.887.412	812.554	44.699.966	63,69%	49,92%	63,42%
RUJAN	41.280.294	383.088	41.663.382	56.911.056	727.613	57.638.669	37,86%	89,93%	38,34%
LISTOPAD	50.640.980	570.651	51.211.631	67.447.808	780.790	68.228.597	33,19%	36,82%	33,23%
STUDENI	42.225.740	358.944	42.584.683	54.787.049	372.627	55.159.676	29,75%	3,81%	29,53%
PROSINAC	44.168.093	398.457	44.566.550	53.347.140	465.537	53.812.677	20,78%	16,83%	20,75%
OBRAČUNATI PPMV - kn	230.736.152	2.900.318	233.636.470	776.531.978	10.693.418	787.225.396	236,55%	268,70%	236,94%

Izvor podataka: IS CURH (na dan 22.2.2016.)

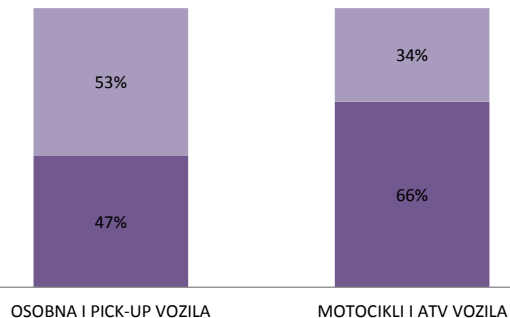
VII-XII / 2013

■ NOVA ■ RABLIJENA



2014

■ NOVA ■ RABLIJENA



BROJ OSOBNIH I PICK-UP VOZILA I OBRAČUNATI POSEBNI POREZ PREMA VRSTI GORIVA

VRSTA GORIVA	DIESEL	BENZIN,...	UKUPNO	DIESEL	BENZIN, ...	UKUPNO	DIESEL	BENZIN, ...	UKUPNO
STAROST VOZILA	NOVA VOZILA								
GODINA / MJESEC	2013			2014			2014. / 2013. (%)		
SIJEČANJ			0	1.299	723	2.022			
VELJAČA			0	1.639	712	2.351			
OŽUJAK			0	2.210	1.205	3.415			
TRAVANJ			0	2.938	1.609	4.547			
SVIBANJ			0	2.835	2.049	4.884			
LIPANJ			0	2.552	1.641	4.193			
SRPANJ	1.079	767	1.846	1.857	1.026	2.883	72,10%	33,77%	56,18%
KOLOVOZ	719	437	1.156	1.041	556	1.597	44,78%	27,23%	38,15%
RUJAN	970	560	1.530	1.270	759	2.029	30,93%	35,54%	32,61%
LISTOPAD	1.231	768	1.999	1.590	861	2.451	29,16%	12,11%	22,61%
STUDENI	1.130	658	1.788	1.232	645	1.877	9,03%	-1,98%	4,98%
PROSINAC	1.197	677	1.874	1.147	787	1.934	-4,18%	16,25%	3,20%
BROJ VOZILA	6.326	3.867	10.193	21.610	12.573	34.183			
SIJEČANJ			0	23.700.789	6.128.895	29.829.684			
VELJAČA			0	28.684.398	7.487.960	36.172.359			
OŽUJAK			0	43.794.902	11.620.783	55.415.685			
TRAVANJ			0	39.640.690	14.074.480	53.715.170			
SVIBANJ			0	42.671.121	13.958.885	56.630.006			
LIPANJ			0	42.076.038	11.190.694	53.266.732			
SRPANJ	10.363.397	6.095.386	16.458.784	37.072.034	8.317.814	45.389.848	257,72%	36,46%	175,78%
KOLOVOZ	8.970.183	3.218.956	12.189.139	19.084.196	4.263.402	23.347.599	112,75%	32,45%	91,54%
RUJAN	17.362.992	4.847.655	22.210.647	23.620.564	6.927.248	30.547.812	36,04%	42,90%	37,54%
LISTOPAD	17.804.647	6.479.571	24.284.219	29.783.978	8.244.038	38.028.015	67,28%	27,23%	56,60%
STUDENI	16.354.889	4.891.632	21.246.520	24.536.922	4.916.094	29.453.015	50,03%	0,50%	38,63%
PROSINAC	18.525.875	6.222.722	24.748.596	23.471.426	5.513.055	28.984.481	26,70%	-11,40%	17,12%
OBRAČUNATI PPMV - kn	89.381.983	31.755.922	121.137.905	378.137.059	102.643.348	480.780.406			

VRSTA GORIVA	DIESEL	BENZIN,...	UKUPNO	DIESEL	BENZIN, ...	UKUPNO	DIESEL	BENZIN, ...	UKUPNO
STAROST VOZILA	RABLJENA VOZILA								
GODINA / MJESEC	2013			2014			2014. / 2013. (%)		
SIJEČANJ			0	2.239	492	2.731			
VELJAČA			0	2.358	475	2.833			
OŽUJAK			0	2.602	538	3.140			
TRAVANJ			0	2.771	627	3.398			
SVIBANJ			0	2.434	534	2.968			
LIPANJ			0	2.432	488	2.920			
SRPANJ	720	214	934	2.936	690	3.626	307,78%	222,43%	288,22%
KOLOVOZ	1.253	387	1.640	2.320	523	2.843	85,16%	35,14%	73,35%
RUJAN	1.949	472	2.421	2.970	580	3.550	52,39%	22,88%	46,63%
LISTOPAD	2.606	604	3.210	3.250	550	3.800	24,71%	-8,94%	18,38%
STUDENI	2.136	505	2.641	2.732	461	3.193	27,90%	-8,71%	20,90%
PROSINAC	2.028	432	2.460	2.728	496	3.224	34,52%	14,81%	31,06%
BROJ VOZILA	10.692	2.614	13.306	31.772	6.454	38.226			
SIJEČANJ			0	18.212.139	3.149.067	21.361.206			
VELJAČA			0	18.841.284	2.727.770	21.569.054			
OŽUJAK			0	20.866.538	2.835.462	23.702.001			
TRAVANJ			0	22.762.377	3.362.346	26.124.723			
SVIBANJ			0	21.001.791	3.846.847	24.848.638			
LIPANJ			0	19.912.290	3.160.368	23.072.658			
SRPANJ	7.462.429	1.688.750	9.151.179	24.444.262	4.609.488	29.053.750	227,56%	172,95%	217,49%
KOLOVOZ	11.251.238	3.370.706	14.621.944	17.409.088	3.130.726	20.539.813	54,73%	-7,12%	40,47%
RUJAN	15.989.872	3.079.774	19.069.647	23.276.054	3.087.190	26.363.244	45,57%	0,24%	38,25%
LISTOPAD	23.052.509	3.304.252	26.356.761	26.223.597	3.196.195	29.419.792	13,76%	-3,27%	11,62%
STUDENI	18.449.142	2.530.078	20.979.220	22.803.957	2.530.077	25.334.033	23,60%	0,00%	20,76%
PROSINAC	17.124.474	2.295.023	19.419.497	21.323.893	3.038.766	24.362.659	24,52%	32,41%	25,45%
OBRAČUNATI PPMV - kn	93.329.665	16.268.583	109.598.247	257.077.270	38.674.302	295.751.572			

BROJ OSOBNIH I PICK-UP VOZILA I OBRAČUNATI POSEBNI POREZ PREMA VRSTI GORIVA

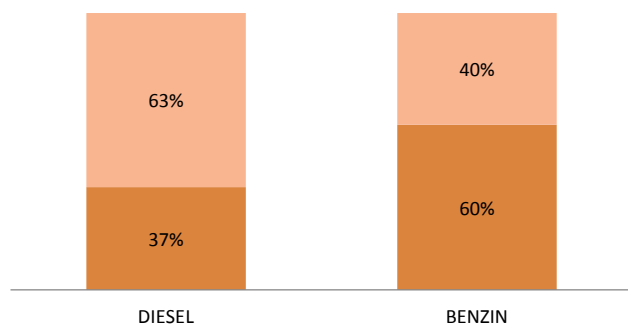
VRSTA GORIVA	DIESEL	BENZIN,...	UKUPNO	DIESEL	BENZIN, ...	UKUPNO	DIESEL	BENZIN, ...	UKUPNO
STAROST VOZILA	VOZILA - ukupno								
GODINA / MJESEC	2013			2014			2014. / 2013. (%)		
SIJEČANJ			0	3.538	1.215	4.753			
VELJAČA			0	3.997	1.187	5.184			
OŽUJAK			0	4.812	1.743	6.555			
TRAVANJ			0	5.709	2.236	7.945			
SVIBANJ			0	5.269	2.583	7.852			
LIPANJ			0	4.984	2.129	7.113			
SRPANJ	1.799	981	2.780	4.793	1.716	6.509	166,43%	74,92%	134,14%
KOLOVOZ	1.972	824	2.796	3.361	1.079	4.440	70,44%	30,95%	58,80%
RUJAN	2.919	1.032	3.951	4.240	1.339	5.579	45,26%	29,75%	41,20%
LISTOPAD	3.837	1.372	5.209	4.840	1.411	6.251	26,14%	2,84%	20,00%
STUDENI	3.266	1.163	4.429	3.964	1.106	5.070	21,37%	-4,90%	14,47%
PROSINAC	3.225	1.109	4.334	3.875	1.283	5.158	20,16%	15,69%	19,01%
BROJ VOZILA	17.018	6.481	23.499	53.382	19.027	72.409			

SIJEČANJ			0	41.912.928	9.277.961	51.190.890			
VELJAČA			0	47.525.682	10.215.730	57.741.413			
OŽUJAK			0	64.661.440	14.456.246	79.117.686			
TRAVANJ			0	62.403.067	17.436.826	79.839.893			
SVIBANJ			0	63.672.913	17.805.731	81.478.644			
LIPANJ			0	61.988.329	14.351.062	76.339.390			
SRPANJ	17.825.827	7.784.136	25.609.963	61.516.295	12.927.303	74.443.598	245,10%	66,07%	190,68%
KOLOVOZ	20.221.421	6.589.662	26.811.083	36.493.284	7.394.128	43.887.412	80,47%	12,21%	63,69%
RUJAN	33.352.864	7.927.429	41.280.294	46.896.618	10.014.438	56.911.056	40,61%	26,33%	37,86%
LISTOPAD	40.857.157	9.783.823	50.640.980	56.007.575	11.440.233	67.447.808	37,08%	16,93%	33,19%
STUDENI	34.804.031	7.421.709	42.225.740	47.340.879	7.446.170	54.787.049	36,02%	0,33%	29,75%
PROSINAC	35.650.348	8.517.745	44.168.093	44.795.319	8.551.821	53.347.140	25,65%	0,40%	20,78%
OBRAČUNATI PPMV - kn	182.711.647	48.024.505	230.736.152	635.214.329	141.317.650	776.531.978			

Izvor podataka: IS CURH (na dan 22.2.2016.)

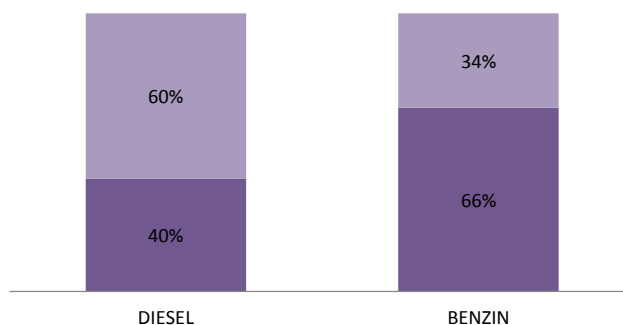
2013

■ NOVA ■ RABLIJENA



2014

■ NOVA ■ RABLIJENA

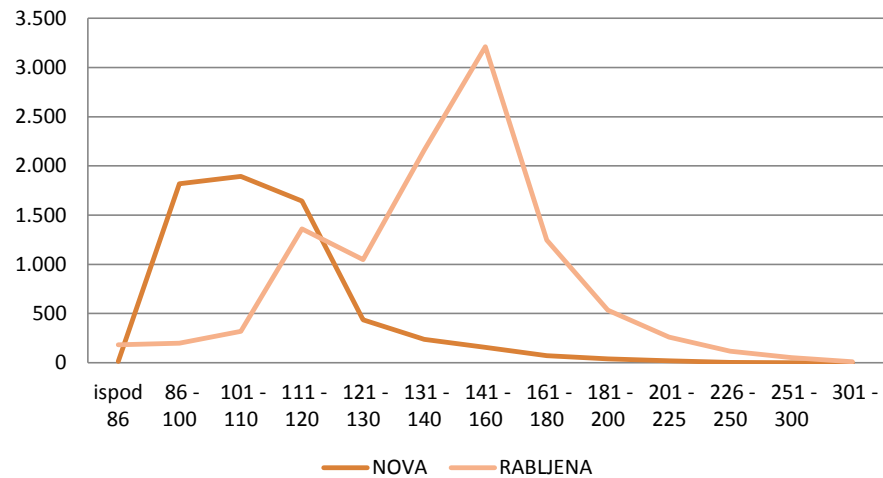


BROJ OSOBNIH I PICK-UP VOZILA PREMA VRSTI GORIVA I EMISIJI CO₂

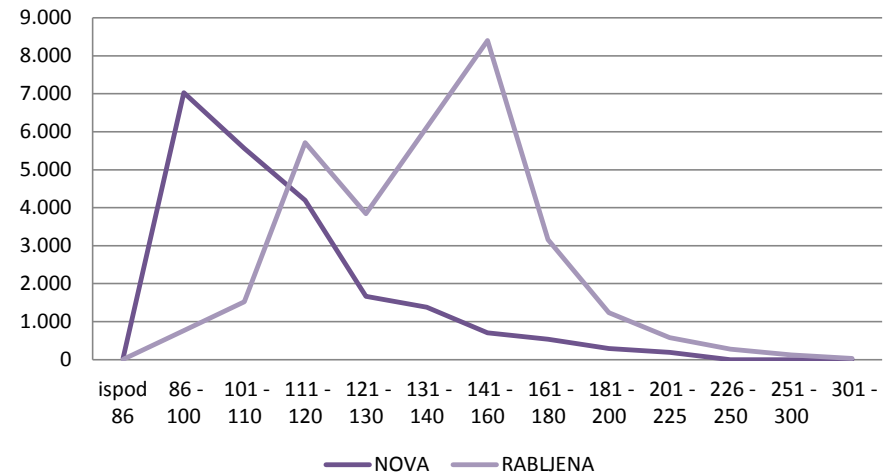
EMISIJA CO ₂	NOVA VOZILA				RABLJENA VOZILA				VOZILA - UKUPNO			
	BROJ VOZILA	Broj vozila - udio (%)	BROJ VOZILA	Broj vozila - udio (%)	BROJ VOZILA	Broj vozila - udio (%)	BROJ VOZILA	Broj vozila - udio (%)	BROJ VOZILA	Broj vozila - udio (%)	BROJ VOZILA	Broj vozila - udio (%)
	VII - XII / 2013		2014		VII - XII / 2013		2014		VII - XII / 2013		2014	
ispod 86	13	0,13%	32	0,09%	182	1,37%	4	0,01%	195	0,83%	36	0,05%
86 - 100	1.819	17,85%	7.026	20,55%	198	1,49%	764	2,00%	2.017	8,58%	7.790	10,76%
101 - 110	1.893	18,57%	5.560	16,27%	319	2,40%	1.524	3,99%	2.212	9,41%	7.084	9,78%
111 - 120	1.642	16,11%	4.198	12,28%	1.360	10,22%	5.716	14,95%	3.002	12,78%	9.914	13,69%
121 - 130	436	4,28%	1.664	4,87%	1.046	7,86%	3.844	10,06%	1.482	6,31%	5.508	7,61%
131 - 140	238	2,33%	1.378	4,03%	2.159	16,23%	6.118	16,00%	2.397	10,20%	7.496	10,35%
141 - 160	155	1,52%	709	2,07%	3.211	24,13%	8.400	21,97%	3.366	14,32%	9.109	12,58%
161 - 180	72	0,71%	537	1,57%	1.247	9,37%	3.155	8,25%	1.319	5,61%	3.692	5,10%
181 - 200	37	0,36%	297	0,87%	532	4,00%	1.237	3,24%	569	2,42%	1.534	2,12%
201 - 225	18	0,18%	196	0,57%	261	1,96%	582	1,52%	279	1,19%	778	1,07%
226 - 250	3	0,03%	2	0,01%	116	0,87%	272	0,71%	119	0,51%	274	0,38%
251 - 300			1	0,00%	51	0,38%	123	0,32%	51	0,22%	124	0,17%
301 -			10	0,03%	10	0,08%	33	0,09%	10	0,04%	43	0,06%
DIESEL	6.326	62,06%	21.610	63,22%	10.692	80,35%	31.772	83,12%	17.018	72,42%	53.382	73,72%
ispod 91	72	0,71%	365	1,07%	39	0,29%	13	0,03%	111	0,47%	378	0,52%
91 - 100	119	1,17%	446	1,30%	37	0,28%	111	0,29%	156	0,66%	557	0,77%
101 - 110	688	6,75%	2.587	7,57%	46	0,35%	184	0,48%	734	3,12%	2.771	3,83%
111 - 120	1.436	14,09%	4.613	13,50%	198	1,49%	575	1,50%	1.634	6,95%	5.188	7,16%
121 - 130	827	8,11%	2.333	6,83%	136	1,02%	378	0,99%	963	4,10%	2.711	3,74%
131 - 140	375	3,68%	1.388	4,06%	406	3,05%	1.189	3,11%	781	3,32%	2.577	3,56%
141 - 160	292	2,86%	679	1,99%	634	4,76%	1.671	4,37%	926	3,94%	2.350	3,25%
161 - 180	25	0,25%	92	0,27%	506	3,80%	1.146	3,00%	531	2,26%	1.238	1,71%
181 - 200	12	0,12%	18	0,05%	288	2,16%	554	1,45%	300	1,28%	572	0,79%
201 - 225	14	0,14%	31	0,09%	159	1,19%	316	0,83%	173	0,74%	347	0,48%
226 - 250	1	0,01%	12	0,04%	72	0,54%	156	0,41%	73	0,31%	168	0,23%
251 - 300			5	0,01%	68	0,51%	110	0,29%	68	0,29%	115	0,16%
301 -	6	0,06%	4	0,01%	25	0,19%	51	0,13%	31	0,13%	55	0,08%
BENZIN,UNP, DIESEL EURO VI	3.867	37,94%	12.573	36,78%	2.614	19,65%	6.454	16,88%	6.481	27,58%	19.027	26,28%
UKUPNO	10.193	100,00%	34.183	100,00%	13.306	100,00%	38.226	100,00%	23.499	100,00%	72.409	100,00%

Izvor podataka: IS CURH (na dan 22.2.2016.)

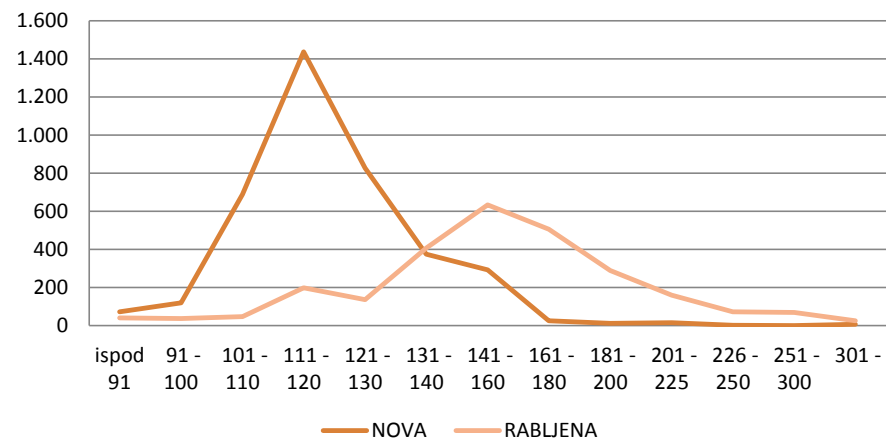
BROJ VOZILA VII-XII/2013 - diesel



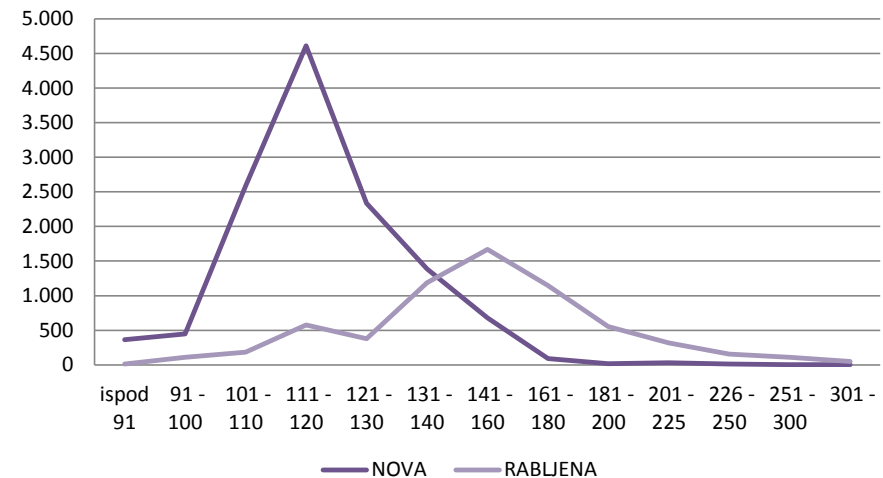
BROJ VOZILA 2014 - diesel



BROJ VOZILA VII-XII/2013 - benzin, UNP, diesel EURO VI



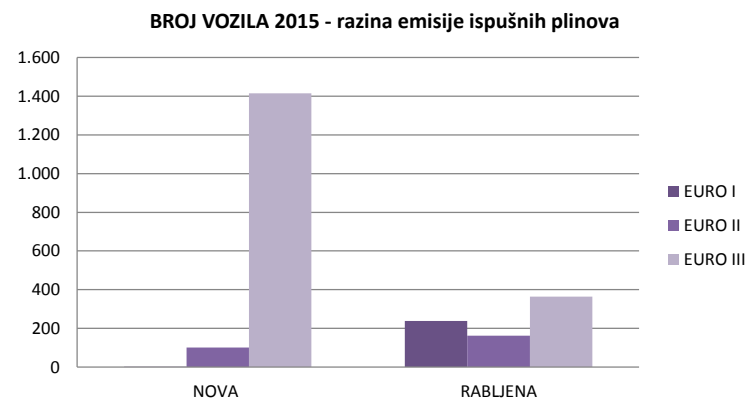
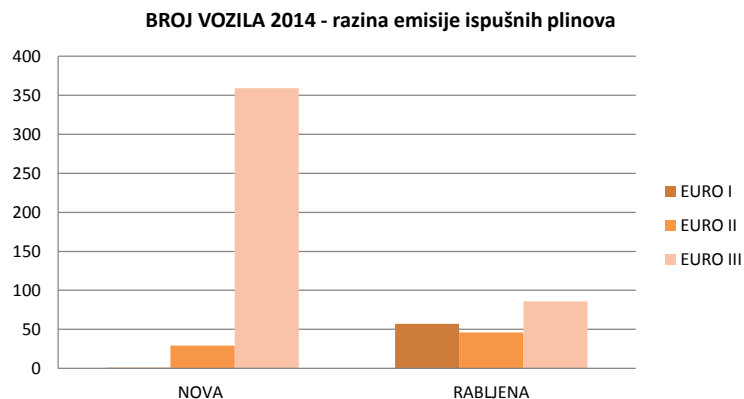
BROJ VOZILA 2014 - benzin, UNP, diesel EURO VI



BROJ MOTOCIKALA I ATV VOZILA PREMA RAZINI EMISIJE ISPUŠNIH PLYNOVA

RAZINA EMISIJE ISPUŠNIH PLYNOVA	NOVA VOZILA				RABljena VOZILA				VOZILA - UKUPNO			
	BROJ VOZILA	Broj vozila - udio (%)	BROJ VOZILA	Broj vozila - udio (%)	BROJ VOZILA	Broj vozila - udio (%)	BROJ VOZILA	Broj vozila - udio (%)	BROJ VOZILA	Broj vozila - udio (%)	BROJ VOZILA	Broj vozila - udio (%)
	VII - XII / 2013		2014		VII - XII / 2013		2014		VII - XII / 2013		2014	
ispod 51							1	0,13%	0		1	0,04%
51 - 125					10	5,29%	52	6,80%	10	1,73%	52	2,28%
126 - 250	1	0,26%			6	3,17%	34	4,44%	7	1,21%	34	1,49%
251 - 400			2	0,13%	6	3,17%	7	0,92%	6	1,04%	9	0,39%
401 - 600					8	4,23%	53	6,93%	8	1,38%	53	2,32%
601 - 800					11	5,82%	37	4,84%	11	1,90%	37	1,62%
801 - 1000					3	1,59%	21	2,75%	3	0,52%	21	0,92%
1001 -					13	6,88%	34	4,44%	13	2,25%	34	1,49%
EURO I	1	0,26%	2	0,13%	57	30,16%	239	31,24%	58	10,03%	241	10,56%
ispod 51					3	1,59%	1	0,13%	3	0,52%	1	0,04%
51 - 125	1	0,26%	1	0,07%	1	0,53%	37	4,84%	2	0,35%	38	1,66%
126 - 250	11	2,83%	70	4,61%	6	3,17%	19	2,48%	17	2,94%	89	3,90%
251 - 400	6	1,54%	13	0,86%	2	1,06%	9	1,18%	8	1,38%	22	0,96%
401 - 600	9	2,31%	10	0,66%	5	2,65%	22	2,88%	14	2,42%	32	1,40%
601 - 800			4	0,26%	12	6,35%	35	4,58%	12	2,08%	39	1,71%
801 - 1000	2	0,51%	1	0,07%	4	2,12%	19	2,48%	6	1,04%	20	0,88%
1001 -			2	0,13%	13	6,88%	20	2,61%	13	2,25%	22	0,96%
EURO II	29	7,46%	101	6,65%	46	24,34%	162	21,18%	75	12,98%	263	11,52%
ispod 51	2	0,51%	1	0,07%	2	1,06%	2	0,26%	4	0,69%	1	0,04%
51 - 125	49	12,60%	169	11,13%	7	3,70%	29	3,79%	56	9,69%	198	8,67%
126 - 250	95	24,42%	276	18,18%	8	4,23%	30	3,92%	103	17,82%	306	13,40%
251 - 400	60	15,42%	297	19,57%	7	3,70%	34	4,44%	67	11,59%	331	14,50%
401 - 600	40	10,28%	141	9,29%	9	4,76%	44	5,75%	49	8,48%	185	8,10%
601 - 800	43	11,05%	247	16,27%	20	10,58%	85	11,11%	63	10,90%	332	14,54%
801 - 1000	26	6,68%	72	4,74%	5	2,65%	57	7,45%	31	5,36%	129	5,65%
1001 -	44	11,31%	212	13,97%	28	14,81%	85	11,11%	72	12,46%	297	13,01%
EURO III	359	92,29%	1.415	93,21%	86	45,50%	364	47,58%	445	76,99%	1.779	77,92%
UKUPNO	389	100,00%	1.518	100,00%	189	100,00%	765	100,00%	578	100,00%	2.283	100,00%

Izvor podataka: IS CURH (na dan 22.2.2016.)



BROJ MOTORNIH VOZILA PREMA MARKI VOZILA
2014

MARKA VOZILA	BROJ VOZILA	Broj vozila - udio (%)
ADRIA	2	0,01%
ALFA ROMEO	53	0,15%
ASTON MARTIN	0	
AUDI	1.129	3,16%
AUSTIN ROVER	0	
BENTLEY	0	
BMW	862	2,41%
BUICK	0	
CADILLAC	0	
CHEVROLET	170	0,48%
CHRYSLER	0	
CITROEN	1.932	5,41%
CORVETTE	0	
DACIA	1.088	3,05%
DAEWOO	0	
DAIHATSU	0	
DODGE	0	
FERRARI	0	
FIAT	570	1,60%
FORD	1.819	5,10%
HONDA	244	0,68%
HUMMER	0	
HYUNDAI	1.603	4,49%
INFINITI	3	0,01%
ISUZU	1	0,00%
IVECO	0	
JAGUAR	3	0,01%
JEEP	35	0,10%
KIA	1.229	3,44%
LADA	12	0,03%
LAMBORGHINI	1	0,00%
LANCIA	19	0,05%
LAND ROVER	32	0,09%
LEXUS	1	0,00%
LINCOLN	0	
MAHINDRA	0	
MASERATI	1	0,00%
MAZDA	1.037	2,90%
MERCEDES-BENZ	679	1,90%
MERCURY	0	

MARKA VOZILA	BROJ VOZILA	Broj vozila - udio (%)
ADRIA	4	0,01%
ALFA ROMEO	828	2,12%
ASTON MARTIN	1	0,00%
AUDI	2.736	7,02%
AUSTIN ROVER	0	
BENTLEY	1	0,00%
BMW	2.793	7,16%
BUICK	1	0,00%
CADILLAC	5	0,01%
CHEVROLET	58	0,15%
CHRYSLER	54	0,14%
CITROEN	992	2,54%
CORVETTE	1	0,00%
DACIA	30	0,08%
DAEWOO	26	0,07%
DAIHATSU	19	0,05%
DODGE	12	0,03%
FERRARI	2	0,01%
FIAT	1.978	5,07%
FORD	2.419	6,20%
HONDA	301	0,77%
HUMMER	1	0,00%
HYUNDAI	214	0,55%
INFINITI	6	0,02%
ISUZU	0	
IVECO	1	0,00%
JAGUAR	47	0,12%
JEEP	27	0,07%
KIA	129	0,33%
LADA	0	
LAMBORGHINI	0	
LANCIA	123	0,32%
LAND ROVER	43	0,11%
LEXUS	16	0,04%
LINCOLN	3	0,01%
MAHINDRA	1	0,00%
MASERATI	3	0,01%
MAZDA	439	1,13%
MERCEDES-BENZ	4.124	10,58%
MERCURY	2	0,01%

MARKA VOZILA	BROJ VOZILA	Broj vozila - udio (%)
ADRIA	6	0,01%
ALFA ROMEO	881	1,18%
ASTON MARTIN	1	0,00%
AUDI	3.865	5,17%
AUSTIN ROVER	0	
BENTLEY	1	0,00%
BMW	3.655	4,89%
BUICK	1	0,00%
CADILLAC	5	0,01%
CHEVROLET	228	0,31%
CHRYSLER	54	0,07%
CITROEN	2.924	3,91%
CORVETTE	1	0,00%
DACIA	1.118	1,50%
DAEWOO	26	0,03%
DAIHATSU	19	0,03%
DODGE	12	0,02%
FERRARI	2	0,00%
FIAT	2.548	3,41%
FORD	4.238	5,67%
HONDA	545	0,73%
HUMMER	1	0,00%
HYUNDAI	1.817	2,43%
INFINITI	9	0,01%
ISUZU	1	0,00%
IVECO	1	0,00%
JAGUAR	50	0,07%
JEEP	62	0,08%
KIA	1.358	1,82%
LADA	12	0,02%
LAMBORGHINI	1	0,00%
LANCIA	142	0,19%
LAND ROVER	75	0,10%
LEXUS	17	0,02%
LINCOLN	3	0,00%
MAHINDRA	1	0,00%
MASERATI	4	0,01%
MAZDA	1.476	1,98%
MERCEDES-BENZ	4.803	6,43%
MERCURY	2	0,00%

BROJ MOTORNIH VOZILA PREMA MARKI VOZILA

2014

MARKA VOZILA	BROJ VOZILA	Broj vozila - udio (%)
MG	0	
MINI	97	0,27%
MITSUBISHI	199	0,56%
MORGAN	0	
MORRIS	0	
NISSAN	965	2,70%
OLDSMOBILE	0	
OPEL	3.978	11,14%
PEUGEOT	2.294	6,43%
PLYMOUTH	0	
PONTIAC	0	
PORSCHE	22	0,06%
PUCH	0	
RENAULT	2.253	6,31%
ROLLS-ROYCE	0	
ROVER	0	
SAAB	0	
SEAT	617	1,73%
SHUANGHUAN	0	
SINCA	0	
SMART	41	0,11%
SSANGYONG	0	
SUBARU	48	0,13%
SUZUKI	527	1,48%
ŠKODA	3.277	9,18%
TATA	1	0,00%
TAVRIA	0	
TOYOTA	1.529	4,28%
VOLKSWAGEN	5.649	15,82%
VOLVO	160	0,45%
ZASTAVA	0	
Nespecificirano (A)	1	0,00%
ACCESS MOTOR	0	
ADLY	2	0,01%
AEON	0	
AIXAM-MEGA	1	0,00%
APRILIA	32	0,09%
BAROSSA	0	
BIMOTA	0	
BMW	92	0,26%

MARKA VOZILA	BROJ VOZILA	Broj vozila - udio (%)
MG	9	0,02%
MINI	162	0,42%
MITSUBISHI	110	0,28%
MORGAN	0	
MORRIS	0	
NISSAN	263	0,67%
OLDSMOBILE	1	0,00%
OPEL	2.746	7,04%
PEUGEOT	2.159	5,54%
PLYMOUTH	0	
PONTIAC	7	0,02%
PORSCHE	31	0,08%
PUCH	1	0,00%
RENAULT	4.342	11,14%
ROLLS-ROYCE	0	
ROVER	19	0,05%
SAAB	30	0,08%
SEAT	400	1,03%
SHUANGHUAN	0	
SINCA	1	0,00%
SMART	1.016	2,61%
SSANGYONG	4	0,01%
SUBARU	20	0,05%
SUZUKI	110	0,28%
ŠKODA	433	1,11%
TATA	1	0,00%
TAVRIA	0	
TOYOTA	406	1,04%
VOLKSWAGEN	8.209	21,05%
VOLVO	287	0,74%
ZASTAVA	1	0,00%
Nespecificirano (A)	18	0,05%
ACCESS MOTOR	0	
ADLY	0	
AEON	0	
AIXAM-MEGA	2	0,01%
APRILIA	21	0,05%
BAROSSA	0	
BIMOTA	0	
BMW	93	0,24%

MARKA VOZILA	BROJ VOZILA	Broj vozila - udio (%)
MG	9	0,01%
MINI	259	0,35%
MITSUBISHI	309	0,41%
MORGAN	0	
MORRIS	0	
NISSAN	1.228	1,64%
OLDSMOBILE	1	0,00%
OPEL	6.724	9,00%
PEUGEOT	4.453	5,96%
PLYMOUTH	0	
PONTIAC	7	0,01%
PORSCHE	53	0,07%
PUCH	1	0,00%
RENAULT	6.595	8,83%
ROLLS-ROYCE	0	
ROVER	19	0,03%
SAAB	30	0,04%
SEAT	1.017	1,36%
SHUANGHUAN	0	
SINCA	1	0,00%
SMART	1.057	1,42%
SSANGYONG	4	0,01%
SUBARU	68	0,09%
SUZUKI	637	0,85%
ŠKODA	3.710	4,97%
TATA	2	0,00%
TAVRIA	0	
TOYOTA	1.935	2,59%
VOLKSWAGEN	13.858	18,55%
VOLVO	447	0,60%
ZASTAVA	1	0,00%
Nespecificirano (A)	19	0,03%
ACCESS MOTOR	0	
ADLY	2	0,00%
AEON	0	
AIXAM-MEGA	3	0,00%
APRILIA	53	0,07%
BAROSSA	0	
BIMOTA	0	
BMW	185	0,25%

BROJ MOTORNIH VOZILA PREMA MARKI VOZILA
2014

MARKA VOZILA	BROJ VOZILA	Broj vozila - udio (%)	MARKA VOZILA	BROJ VOZILA	Broj vozila - udio (%)	MARKA VOZILA	BROJ VOZILA	Broj vozila - udio (%)
	NOVA			RABLJENA			UKUPNO	
CAN-AM	0		CAN-AM	0		CAN-AM		
CC	0		CC	0		CC	0	
CFMOTO	27	0,08%	CFMOTO	2	0,01%	CFMOTO	29	0,04%
DAELIM	0		DAELIM	0		DAELIM	0	
DERBI	8	0,02%	DERBI	2	0,01%	DERBI	10	0,01%
DUCATI	24	0,07%	DUCATI	23	0,06%	DUCATI	47	0,06%
EGLMOTOR	14	0,04%	EGLMOTOR	0		EGLMOTOR	14	0,02%
FUXIN	4	0,01%	FUXIN	0		FUXIN	4	0,01%
GILERA	4	0,01%	GILERA	7	0,02%	GILERA	11	0,01%
GOES	4	0,01%	GOES	0		GOES	4	0,01%
HARLEY DAVIDSON	60	0,17%	HARLEY DAVIDSON	25	0,06%	HARLEY DAVIDSON	85	0,11%
HONDA	154	0,43%	HONDA	115	0,29%	HONDA	269	0,36%
HUSABERG	2	0,01%	HUSABERG	1	0,00%	HUSABERG	3	0,00%
HUSQVARNA	2	0,01%	HUSQVARNA	0		HUSQVARNA	2	0,00%
JINGLING	0		JINGLING	0		JINGLING	0	
KAWASAKI	39	0,11%	KAWASAKI	62	0,16%	KAWASAKI	101	0,14%
KEEWAY	4	0,01%	KEEWAY	3	0,01%	KEEWAY	7	0,01%
KTM	54	0,15%	KTM	10	0,03%	KTM	64	0,09%
KYMCO	102	0,29%	KYMCO	10	0,03%	KYMCO	112	0,15%
LINHAI	3	0,01%	LINHAI	0		LINHAI	3	0,00%
LONGJIA	0		LONGJIA	0		LONGJIA	0	
MALAGUTI	0		MALAGUTI	0		MALAGUTI	0	
MORGAN	0		MORGAN	0		MORGAN	0	
MOTO GUZZI	1	0,00%	MOTO GUZZI	5	0,01%	MOTO GUZZI	6	0,01%
MV AGUSTA	1	0,00%	MV AGUSTA	1	0,00%	MV AGUSTA	2	0,00%
PIAGGIO	162	0,45%	PIAGGIO	75	0,19%	PIAGGIO	237	0,32%
POLARIS	0		POLARIS	0		POLARIS	0	
PUCH	3	0,01%	PUCH	0		PUCH	3	0,00%
SHERCO	1	0,00%	SHERCO	0		SHERCO	1	0,00%
SHINERAY	2	0,01%	SHINERAY	0		SHINERAY	2	0,00%
SUZUKI	37	0,10%	SUZUKI	139	0,36%	SUZUKI	176	0,24%
SYM	12	0,03%	SYM	4	0,01%	SYM	16	0,02%
VESPA	1	0,00%	VESPA	1	0,00%	VESPA	2	0,00%
YAMAHA	577	1,62%	YAMAHA	102	0,26%	YAMAHA	679	0,91%
Nespecificirano (M)	89	0,25%	Nespecificirano (M)	62	0,16%	Nespecificirano (M)	151	0,20%
UKUPNO	35.701	100,00%	UKUPNO	38.991	100,00%	UKUPNO	74.692	100,00%

Izvor podataka: IS CURH (na dan 22.2.2016.)

BROJ MOTORNIH VOZILA PREMA GODINI PROIZVODNJE
2014

GODINA PROIZVODNJE	BROJ VOZILA	Broj vozila - udio (%)	BROJ VOZILA	Broj vozila - udio (%)	BROJ VOZILA	Broj vozila - udio (%)
	NOVA			RABLJENA		UKUPNO
1924					0	
1930					0	
1931					0	
1939					0	
1942					0	
1947					0	
1948			4	0,01%	4	0,01%
1950					0	
1953			1	0,00%	1	0,00%
1955						
1956			2	0,01%	2	0,00%
1957					0	
1958			5	0,01%	5	0,01%
1959			1	0,00%	1	0,00%
1960			1	0,00%	1	0,00%
1961					0	
1962					0	
1963					0	
1964					0	
1965			1	0,00%	1	0,00%
1966			3	0,01%	3	0,00%
1967			1	0,00%	1	0,00%
1968			2	0,01%	2	0,00%
1969			2	0,01%	2	0,00%
1970			3	0,01%	3	0,00%
1971			1	0,00%	1	0,00%
1972			4	0,01%	4	0,01%
1973			5	0,01%	5	0,01%
1974			3	0,01%	3	0,00%
1975			1	0,00%	1	0,00%
1976					0	
1977			4	0,01%	4	0,01%
1978					0	
1979			7	0,02%	7	0,01%
1980			3	0,01%	3	0,00%
1981			7	0,02%	7	0,01%
1982			6	0,02%	6	0,01%
1983			10	0,03%	10	0,01%
1984			10	0,03%	10	0,01%
1985			7	0,02%	7	0,01%
1986			8	0,02%	8	0,01%
1987			14	0,04%	14	0,02%
1988			19	0,05%	19	0,03%
1989			22	0,06%	22	0,03%
1990			22	0,06%	22	0,03%
1991			47	0,12%	47	0,06%
1992			38	0,10%	38	0,05%
1993			42	0,11%	42	0,06%
1994			58	0,15%	58	0,08%
1995			81	0,21%	81	0,11%
1996			110	0,28%	110	0,15%
1997			143	0,37%	143	0,19%
1998			212	0,54%	212	0,28%
1999			442	1,13%	442	0,59%
2000			1.271	3,26%	1.271	1,70%
2001			2.953	7,57%	2.953	3,95%
2002			3.417	8,76%	3.417	4,57%
2003			4.077	10,46%	4.077	5,46%
2004			4.263	10,93%	4.263	5,71%
2005			3.862	9,90%	3.862	5,17%
2006			3.021	7,75%	3.021	4,04%
2007			2.567	6,58%	2.567	3,44%
2008			2.118	5,43%	2.118	2,84%
2009			2.135	5,48%	2.135	2,86%
2010			3.220	8,26%	3.220	4,31%
2011	1	0,00%	2.675	6,86%	2.676	3,58%
2012	1	0,00%	1.124	2,88%	1.125	1,51%
2013	37	0,10%	780	2,00%	817	1,09%
2014	35.662	99,89%	156	0,40%	35.818	47,95%
UKUPNO	35.701	100,00%	38.991	100,00%	74.692	100,00%

BROJ MOTORNIH VOZILA PO CARINSKIM UREDIMA

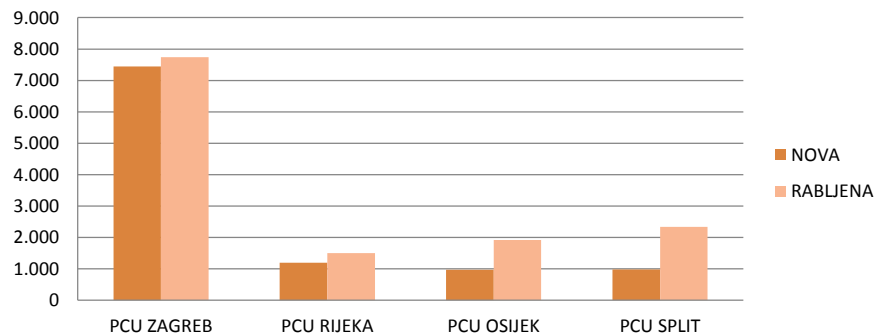
VII - XII / 2013

2014

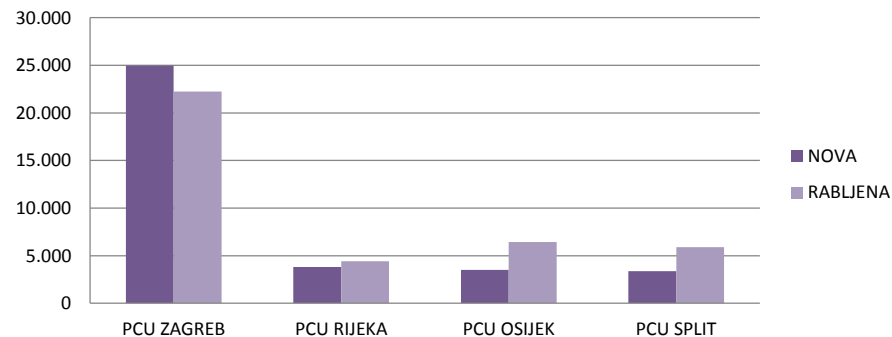
STAROST VOZILA:	NOVA VOZILA		RABLJENA VOZILA		VOZILA - UKUPNO		NOVA VOZILA		RABLJENA VOZILA		VOZILA - UKUPNO	
	Broj vozila	Broj vozila - udio (%)	Broj vozila	Broj vozila - udio (%)	Broj vozila	Broj vozila - udio (%)	Broj vozila	Broj vozila - udio (%)	Broj vozila	Broj vozila - udio (%)	Broj vozila	Broj vozila - udio (%)
PCU ZAGREB			395	2,93%	395	1,64%						
CARINSKI URED ZAGREB I	2.829	26,73%	1.895	14,04%	4.724	19,62%	9.140	25,60%	5.452	13,98%	14.592	19,54%
CARINSKI URED ZAGREB II	3.552	33,57%	2.701	20,01%	6.253	25,97%	12.933	36,23%	7.525	19,30%	20.458	27,39%
CARINSKI URED KRAPINA	119	1,12%	338	2,50%	457	1,90%	368	1,03%	1.188	3,05%	1.556	2,08%
CARINSKI URED VARAŽDIN	519	4,90%	755	5,59%	1.274	5,29%	1.241	3,48%	2.954	7,58%	4.195	5,62%
CARINSKI URED KOPRIVNICA	189	1,79%	871	6,45%	1.060	4,40%	597	1,67%	2.396	6,15%	2.993	4,01%
CARINSKI URED SISAK	83	0,78%	478	3,54%	561	2,33%	321	0,90%	1.778	4,56%	2.099	2,81%
CARINSKI URED KARLOVAC	150	1,42%	310	2,30%	460	1,91%	383	1,07%	950	2,44%	1.333	1,78%
PODRUČNI CARINSKI URED ZAGREB	7.441	70,32%	7.743	57,38%	15.184	63,06%	24.983	69,98%	22.243	57,05%	47.226	63,23%
PCU RIJEKA			39	0,29%	39	0,16%						
CARINSKI URED RIJEKA	821	7,76%	710	5,26%	1.531	6,36%	2.436	6,82%	2.100	5,39%	4.536	6,07%
CARINSKI URED PULA - POLA	373	3,52%	687	5,09%	1.060	4,40%	1.381	3,87%	2.087	5,35%	3.468	4,64%
CARINSKI URED GOSPIĆ			68	0,50%	68	0,28%	4	0,01%	226	0,58%	230	0,31%
PODRUČNI CARINSKI URED RIJEKA	1.194	11,28%	1.504	11,14%	2.698	11,21%	3.821	10,70%	4.413	11,32%	8.234	11,02%
PCU OSIJEK			101	0,75%	101	0,42%						
CARINSKI URED OSIJEK	786	7,43%	984	7,29%	1.770	7,35%	3.017	8,45%	3.744	9,60%	6.761	9,05%
CARINSKI URED SLAVONSKI BROAD	135	1,28%	660	4,89%	795	3,30%	419	1,17%	2.159	5,54%	2.578	3,45%
CARINSKI URED VIROVITICA	46	0,43%	169	1,25%	215	0,89%	77	0,22%	543	1,39%	620	0,83%
PODRUČNI CARINSKI URED OSIJEK	967	9,14%	1.914	14,18%	2.881	11,97%	3.513	9,84%	6.446	16,53%	9.959	13,33%
PCU SPLIT			27	0,20%	27	0,11%						
CARINSKI URED SPLIT	552	5,22%	1.393	10,32%	1.945	8,08%	2.007	5,62%	3.614	9,27%	5.621	7,53%
CARINSKI URED ŠIBENIK	48	0,45%	225	1,67%	273	1,13%	382	1,07%	640	1,64%	1.022	1,37%
CARINSKI URED ZADAR	225	2,13%	422	3,13%	647	2,69%	584	1,64%	986	2,53%	1.570	2,10%
CARINSKI URED PLOČE	18	0,17%	149	1,10%	167	0,69%	39	0,11%	375	0,96%	414	0,55%
CARINSKI URED DUBROVNIK	137	1,29%	118	0,87%	255	1,06%	372	1,04%	274	0,70%	646	0,86%
PODRUČNI CARINSKI URED SPLIT	980	9,26%	2.334	17,30%	3.314	13,76%	3.384	9,48%	5.889	15,10%	9.273	12,41%
CARINSKA UPRAVA RH	10.582	100,00%	13.495	100,00%	24.077	100,00%	35.701	100,00%	38.991	100,00%	74.692	100,00%

Izvor podataka: IS CURH (na dan 22.2.2016.)

Broj vozila - 2013



Broj vozila - 2014



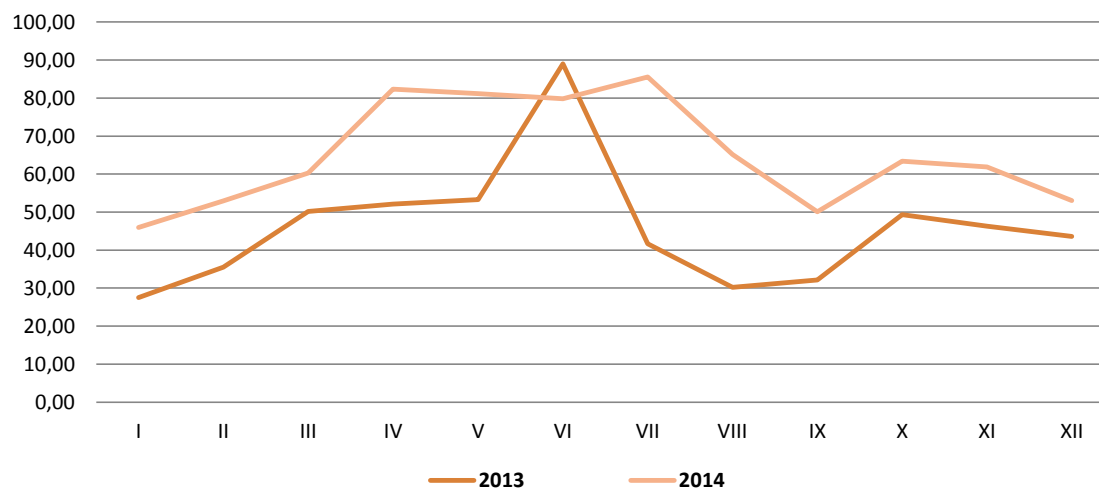
OSTVARENI PRIHODI OD POSEBNOG POREZA NA MOTORNA VOZILA

MJESEC	2013			2014			RAZLIKA: 2014.g. - 2013.g.	
	- OSOBNI AUTOMOBILI, OSTALA MOTORNA VOZILA, PLOVILA I ZRAKOPLOVI *	- MOTORNA VOZILA ** - od 01.07.2013.	UKUPNO - kn	- OSOBNI AUTOMOBILI, OSTALA MOTORNA VOZILA, PLOVILA I ZRAKOPLOVI *	- MOTORNA VOZILA ** - od 01.07.2013.	UKUPNO - kn		
SIJEČANJ	27.549.704	0	27.549.704	245.241	45.746.190	45.991.431	66,94%	18.441.728
VELJAČA	35.528.037	0	35.528.037	51.356	52.907.219	52.958.575	49,06%	17.430.538
OŽUJAK	50.144.065	0	50.144.065	187.983	60.095.445	60.283.427	20,22%	10.139.362
TRAVANJ	52.099.458	0	52.099.458	268.114	82.106.383	82.374.497	58,11%	30.275.039
SVIBANJ	53.245.616	0	53.245.616	55.623	81.127.683	81.183.306	52,47%	27.937.690
LIPANJ	88.967.711	0	88.967.711	80.164	79.712.241	79.792.405	-10,31%	-9.175.306
SRPANJ	32.152.216	9.521.719	41.673.936	5.166.639	80.354.080	85.520.719	105,21%	43.846.783
KOLOVOZ	5.389.795	24.801.273	30.191.068	-5.066.797	70.220.007	65.153.210	115,80%	34.962.142
RUJAN	-2.203.011	34.369.356	32.166.345	15.872	50.071.201	50.087.073	55,71%	17.920.728
LISTOPAD	2.268.813	47.092.835	49.361.648	229.103	63.174.142	63.403.246	28,45%	14.041.598
STUDENI	-3.370.865	49.685.962	46.315.097	84.207	61.750.373	61.834.580	33,51%	15.519.483
PROSINAC	203.926	43.378.646	43.582.572	25.644	52.983.723	53.009.367	21,63%	9.426.795
UKUPNO	341.975.465	208.849.791	550.825.257	1.343.149	780.248.688	781.591.836	41,89%	230.766.580

* prihodi vezani uz Zakon o posebnim porezima na osobne automobile, ostala motorna vozila, plovila i zrakoplove

** prihodi vezani uz Zakon o posebnom porezu na motorna vozila

PRIHODI - mil Kn



POVRAT POSEBNOG POREZA NA MOTORNA VOZILA

MJESEC	BROJ VOZILA		Iznos povrata (kn)	
	2013		2014	
SIJEČANJ			1	6.269
VELJAČA			34	405.776
OŽUJAK				
TRAVANJ			48	243.292
SVIBANJ			15	77.464
LIPANJ				
SRPANJ			65	494.620
KOLOVOZ	8	39.948	34	486.834
RUJAN	2	6.970	87	777.711
LISTOPAD	3	33.505	250	2.045.983
STUDENI	1	8.547	442	2.664.816
PROSINAC			653	4.868.918
UKUPNO	14	88.970	1.629	12.071.683

- PO CARINSKIM UREDIMA

CARINSKI URED	BROJ VOZILA		Iznos povrata (kn)	
	2013		2014	
CARINSKI URED ZAGREB I	2	22.006	773	5.186.402
CARINSKI URED ZAGREB II	5	22.675	234	1.694.515
CARINSKI URED KRAPINA				
CARINSKI URED VARAŽDIN	1	9.687		
CARINSKI URED KOPRIVNICA				
CARINSKI URED SISAK	1	1.902	1	9.362
CARINSKI URED KARLOVAC				
PODRUČNI CARINSKI URED ZAGREB	9	56.270	1.008	6.890.280
CARINSKI URED RIJEKA	2	20.046	41	258.440
CARINSKI URED PULA - POLA			326	2.862.420
CARINSKI URED GOSPIĆ				
PODRUČNI CARINSKI URED RIJEKA	2	20.046	367	3.120.860
CARINSKI URED OSIJEK			176	1.354.469
CARINSKI URED SLAVONSKI BROD				
CARINSKI URED VIROVITICA				
PODRUČNI CARINSKI URED OSIJEK	0	0	176	1.354.469
CARINSKI URED SPLIT			60	457.457
CARINSKI URED ŠIBENIK				
CARINSKI URED ZADAR	2	6.354	18	248.616
CARINSKI URED PLOČE	1	6.300		
CARINSKI URED DUBROVNIK				
PODRUČNI CARINSKI URED SPLIT	3	12.654	78	706.074
CARINSKA UPRAVA RH	14	88.970	1.629	12.071.683